

CE VITA WELLNESS

I User Manual



| Safety Precautions

Precautions for safety are to protect the safety of users and damage to property due to accidents. and to prevent inconvenience. Please read it carefully and use it correctly.

- The copyright of this manual belongs to HR Meditech.
- It is prohibited to reproduce part or all of the contents of this manual without the prior written consent of HRmeditech, to store it in an information retrieval system, or to transmit it in any form or means, such as machine, copier, or disk copy.
- HRmeditech is not responsible for any patent issues related to the use of the information contained in this manual.
- Nor shall we be liable for any damages resulting from the use of the information contained in this manual.
- HR Meditech shall not be liable for any damages and losses, expenses or expenses incurred by the purchaser of this product or any third party due to the accident, misuse, abuse of this product, or unauthorized modification, repair, or modification of this product, or non-compliance with the operation and management guidelines of HR Meditech. not.
- HRmeditech is not responsible for any damages or problems caused by the use of options or consumables other than those designated as genuine or authorized products.
- Illustrations in this manual may differ from the actual product.
- Third-party product names used in this manual are for identification purposes only and may be trademarks of their respective owners.
- HRmeditech does not have any rights to these trademarks.

Copyright©2017 HR Meditech

- ※ **In case of defects caused by the customer's direct installation, A/S costs may be incurred. Installation through the A/S center designated by the head office is recommended.**
- ※ **The contents of the user manual are not provided without prior notice to the user in order to improve the function of the product. It can be changed arbitrarily.**

| Safety Precautions

- Before using the product, please read the manual and how to use it.
- Do not place the product in direct sunlight or near fire or hot objects.
- Do not hang or climb on the installed product.
- Be careful as the tip temperature may rise and become hot when used for a long time.
- When not in use for a long time, turn off the power and remove the power plug before storing.
- Be careful not to tip over or fall other objects on the product.
- Do not install and use in a place with high humidity, such as a bathroom or a place exposed to moisture or splashing water.
- Do not place liquid containers such as cups or cosmetics on top of the product.
- Be careful not to let foreign substances such as water or coins enter the product.
- If a foreign object gets inside the product, immediately turn off the power and unplug the power supply.

Please contact the A/S center.

- If the product emits a strange smoke or smell during use, immediately stop using it and

After unplugging the power plug, contact the A/S center.

- Do not disassemble or modify the product arbitrarily, and in case of failure,

Please contact the A/S center.

- Even during the free warranty period, if the product is disassembled arbitrarily, the warranty will be excluded.

I Index

Safety Precautions	2
Product Components	5
Connector Description	6
Heat + Suction + E-Therapy Connection Terminal Description	7
Screen Guide and Instructions for Use	8
Description of energy mode and suction mode	9
Usage Tips for Effective Management	10
Consumer Protection Regulations	11
Precautions in case of abnormal symptoms	12
Product Warranty.....	12

Product components

Check out the list below to see what's included. Missing or damaged
Contact the place of purchase.



Connector Description

After checking each handpiece and connecting terminals, connect them properly.

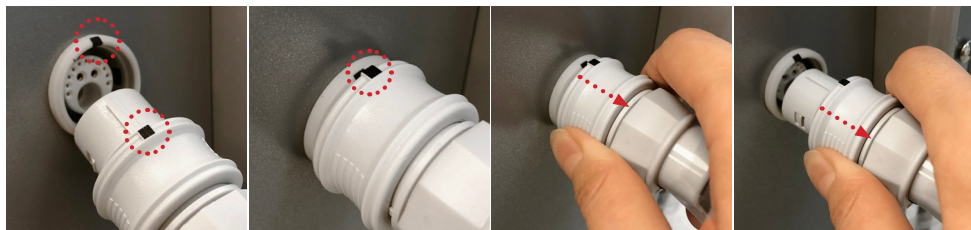


back of the device

- 1 power line
- 2 E-THERAPY Multi Handpiece (Acupuncture Point, Comb Handpiece)
- 3 HEAT + SUCTION + E-THERAPY Handpiece (Large, Medium, Small)
- 4 plate

Heat + Suction + E-Therapy Connection Terminal Description

After checking each description, connect and disconnect appropriately.



When connecting the heat + suction + E-therapy connection line to the main body, please connect the black marks.

When removing the heat + suction + E-therapy connection line and the main body, disconnect the connection terminal. Pull it down and remove it



When connecting the heat + suction + E-therapy connection line and the handpiece, connect them according to the black marks.



When removing the heat + suction + E-therapy connection cord and handpiece Pull the connector down and remove it.

Screen guide and instructions

Cellvita consists of two care systems: heat + suction + E-therapy and E-therapy.

Initial screen (Home mode screen)



Handpiece selection

*function you want to use
HEAT + SUCTION + E-THERAPY
or
Choose one of E-THERAPY

*When HEAT + SUCTION + E-THERAPY is selected, the following screen changes

HEAT + SUCTION + E-THERAPY screen



Temperature, suction strength, usage time setting

up / down
Control each with the touch of a button

Energy level setting

20
up / down
Control each with the touch of a button

Energy mode setting



Start after selecting the desired mode

Suction mode setting

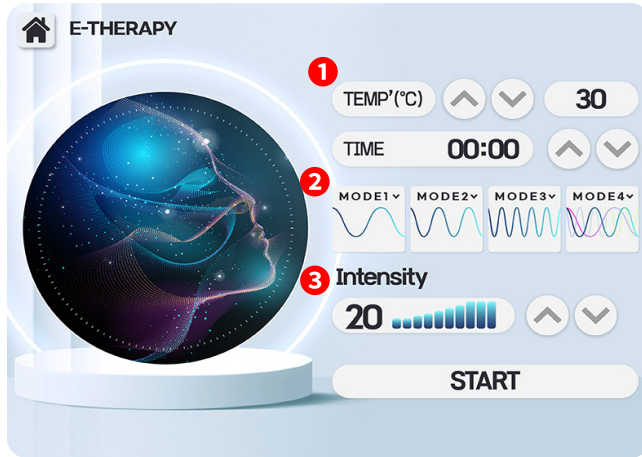


Start after selecting the desired suction mode

Screen guide and instructions

*When E-THERAPY is selected, the following screen changes

E-THERAPY screen



Temperature and usage time setting

up / down

Control each with the touch of a button

Energy mode setting



Start after selecting the desired mode

Energy level setting

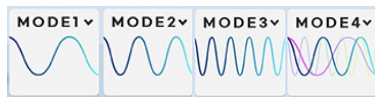


up / down

Control each with the touch of a button

Energy Mode, Suction Mode Description

Energy mode setting



MODE1: Relax

(relieve tension and gently massage)

MODE2: Light

(light lymph circulation massage)

MODE3: cycle

(continuous in detail without omission)

MODE4: Powerful

(1·2·3 combined mode, strong management)

Suction mode setting



①, ② Suction mode

Pulse to gently release lymphatic circulation mode

③, ④, ⑤ suction mode

Fascia Mode A pulse that holds the fascia layer strong and deeply.

⑥ Suction continuous mode

⑦ AUTO suction mode :1~6 mode random method

Usage tips for effective management

HEAT + SUCTION + E-THERAPY screen



Energy (Mode 1) + Warm (45-50 degrees)
10 to 15 minutes administration **(using suction X)**

Warm up before administration to relieve tight muscles or blood.
Deep and gentle release to maximize aftercare

Appropriately adjust the handpiece
and mode according to the customer

★In the case of intensive management focusing on energy★
No suction mode or low suction intensity (1 to 5)

★When managing intensively with suction★
Use low energy level (1 to 5)

Consumer Protection Regulations

About the service

In accordance with the Consumer Damage Compensation Regulations for each item, our head office guarantees the products as follows. The installation of the product is requested by an installation expert, and A/S cannot be received if a failure occurs due to installation by a person other than an installation expert. In case of malfunction, please contact the service center.

Free service (The product warranty period is 1 year.)

Consumer Damage Type	Rewards	
	Within the warranty period	after the warranty period
In case of major abnormality within 10 days of purchase	Product Exchange	
In the event of a major abnormality in performance or function that occurs under normal use within 14 days of purchase	Product Exchange	

Paid Service

1) If it is not a malfunction

- If it is not a malfunction, you will be charged a fee if you request service, so be sure to read the user manual. (If repair is not possible, it is limited to a separate standard)
- In case of reinstallation due to an installation problem rather than a malfunction of the product

2) In case of malfunction due to consumer negligence

- In case of malfunction due to negligence of consumer handling or reckless repair or remodeling
- In case of malfunction due to repair by a person other than the agent or A/S designated technician
- In case of malfunction due to incorrect use of electric capacity
- In case of malfunction or damage caused by dropping, etc. during movement after installation
- In case of a malfunction due to the use of consumables or options not specified by the head office

3) In other cases

- In case of malfunction due to natural disasters (lightning, ash, salt damage, water damage, etc.)
- When used in an unstable power source that cannot be protected by shock voltage

Precautions for abnormal symptoms



caution

If there is an abnormality even after checking as follows, do not use it to prevent accidents. After stopping and unplugging the power plug from the outlet, contact the customer service center.
Personal repairs are dangerous, so never do it.

Is the power plug properly plugged into the outlet?

Is the handpiece installed correctly?

Is the handpiece cable securely plugged into the body?

Product Warranty

product name	C E L L V I T A (셀 비 타)
Serial Number	
Date of purchase (installation)	2 0 년 월 일
customer name	
telephone	
address	
installation point name	
telephone	
address	
Installer name	

※ Note: When requesting repairs, you must present this warranty with the date of purchase to receive sufficient service. Please keep it well.

- 1) The free warranty period is calculated from the date of purchase, so please fill out the warranty for this product.
- 2) If the date of purchase cannot be confirmed, the warranty period is calculated from the date 30 days have elapsed from the date of manufacture of this product.

This warranty is valid only within the Republic of Korea.

We are not responsible for accidents caused by the user's ignorance of precautions.